

LA NEWS



**Annual Conference
19-21 January Goa**

Changing Climates : Evolving Landscapes

Recent research across the world established that climate change is the most serious global environmental challenge today. It has been projected that changes in natural cycles will severely affect socio-economic and environmental textures at global as well as regional levels. Changes in rainfall patterns will severely impact agriculture and water resources. Assessments carried out by Intergovernmental Panel on Climate Change (IPCC) highlighted that countries mostly affected by climate change would be agrarian-dominated, eco-sensitive economies.

In the INDIAN context, the strive for sustainable development is confronted by challenges from the rising global threat of climate change. Extreme climate events are becoming more frequent and cause widespread impact to both natural and human systems. The National Action Plan on Climate Change (NAPCC) states that climate change may alter the distribution and quality of India's natural resources and adversely affect the livelihoods of its people. With the economy so closely tied to natural resources and sectors of agriculture, water and forestry being so sensitive to the changing climate, India today faces huge challenges from climate change. These risks and impacts are likely to have differential impacts within cities, with some sections of the populations able to afford adaptive, coping and resilience measures, while others are exposed to higher risks with little or no access to protection measures.

Landscape architects, knowingly or otherwise, work closely within this larger framework and face the challenges posed by climate change. Working with sectors like agriculture, forests, biodiversity, wildlife, water resources, urbanization, health and allied fields, the landscape architecture profession is positioned to effectively and critically address the challenges of climate change.

With this background, the Indian Society of Landscape Architects (ISOLA), take this opportunity to structure their Annual Conference, scheduled for 19-22 January 2017, in GOA, Changing Climates and Evolving Landscapes. The conference is positioned to deliberate on the challenges, mitigation and adaptation of climate change in the planning, management and design of landscapes at regional, urban and spatial scales. The central idea is to critically position Climate Change as the determinant and primary factor for interventions at all scales. Rather than examine the idea of Climate Change only through individual sectors, the idea would be to position the profession of landscape architecture as a practice that could mediate cross sectoral conversations of climate change towards a holistic outreach.

Track 1 : Challenges
Track 2 : Mitigation
Track 3 : Adaptation

Editorial

It is with great enthusiasm that we present the January 2017 issue of the ISOLA Newsletter. Sharing of happenings and ideas between members of any organisation, especially an assembly of creative professionals like ISOLA, is a great opportunity for growth and intellectual enrichment.

It is with this thought in mind that we introduce a new format, one that includes articles and photo essays written around a theme, apart from the updates about events, memberships, etc.

This issue deals with the theme Art and Landscape. We hope you enjoy reading it and also contribute to the forthcoming issues with enthusiasm. Awaiting your suggestions and inputs.

Editorial team



Art and Landscape



11th Annual General Body meeting



Events and talks



Membership updates

and more

Dear Members

Greetings to you all !

It has been quite a busy year since we all met at Bangalore, especially with this very active and committed team in the EC.

Neelima and team have been working hard to bring out this EC's 2nd edition of the newsletter.

This year we co-opted Nidhi Madan into the council, who in the last few months has been working tirelessly on first reorganising the membership list and then to get ISOLA to go online. Now you will be able to update and renew your memberships and register for conferences online. We are doing the trials for setting up an online voting system. Also please do visit the new look ISOLA website.

This time after the very successful conference at Bangalore convened by Mohan Rao and team, with no chapter volunteering to host the next, the EC is hosting the 2017 conference at Panjim, Goa in January with the support of various members and Chapters.

We have introduced a new category of Unbuilt Projects Award this time, and have received a huge response!

In memory of the two founder members that we lost , it has been decided to rename the ISOLA NASA TROPHY as the Mohammed Shaheer Trophy and the ISOLA student's award as the Prabhakar Bhagwat Trophy.

Please do read the secretary's report at the AGM, Shilpa has elaborated on all the activities taken up by the EC.

A warm welcome to the new Kerala Chapter and all the new members who have joined ISOLA.

Hoping to see you all soon at Goa in January.

Best Wishes
Rohit Marol



The natural Landscape is a giant artwork created by nature itself. It has inspired Landscape painters, poets, writers and land artists since ages. Shivram Somasundaram takes us on a visual tour of the Lake District in England, exploring the beauty of the place that has inspired the likes of poet William Wordsworth, writer Rev William Gilpin and painters Joseph Wright, Thomas Sunderland and John Constable, to create their masterpieces.



THE LAKE DISTRICT *Excursion 21-23 March 2008*

The Lake District is a part of the Cumbria county, which lies in the North of England. At its heart is a series of valleys (dales) cutting through an uplifted button of mountains (fells). The beauty of the Lake district has stirred the imagination of Poets and Landscape Painters for centuries. This is England's largest national park with high mountains, sparkling lakes and quaint villages.

The three day jaunt turned out to be an inward journey, inspired by lakes, waterfalls, streams, rivulets, tarns, meadows, woodlands, nature trails, peaks, rain, hailstorm, snow, flora, fauna, Architecture and a lot more wonders. The excursion mostly involved walks and treks throughout the day, crossing over different landscapes, from one village to another with stop-over during the evenings. A couple of ferry journeys helped in feeling the chilly wind and touching the deep, blue water of the lakes.

The adventure covered only a third of the beautiful place, however, it was enough to stir the gentle soul with a wish to come back again.

Shivram Somasundaram



Strut to sail Lake Windermere



Swan song Lake Windermere



Trekking high Loughrigg Fell



An old stone bridge

The journey goes on
through the beautiful
English Landscape



Sublime Loughrigg Tam



Carpet shadows Towards Loughrigg Tam



Signs of life River Brathay Langdale



Heading upward Towards Langdale Fell



Sheltered by clouds Easedale Tam



Shades of blue Lake Grassmere



Scale View from Sergeant's Crag Langdale Fell

A landscape that reveals more stunning views as it unfolds



Quayside Lake Derwentwater



Mixed emotions Lodore Falls Keswick



My heart leaps up!

*My heart leaps up when I behold
A rainbow in the sky
So was it when my life began;
So is it now I am a man;
So be it when I shall grow old,
Or let me die!
The child is father of the man,
And I could wish my days to be
Bound each to each by natural piety.*

William Wordsworth

Shivram Somsaundaram is a Landscape Architect and founder of Shivram Associates, a landscape practice based in Pune. He is also involved in Academics as Visiting Faculty at both Under Graduate and Post Graduate level at prominent Architectural colleges in Pune. He can be reached at architectshivram@gmail.com

Urban Landscapes are a collage of different elements - buildings, nature, vehicles, people and much more. What is the place or Art in this urban scenario? Rajan Bhatt explores this theme with an interesting photo journey through cities in India and abroad.

ART AND URBAN LANDSCAPE

Rajan Bhatt

Talking about Art in Urban-landscape brings about many overlapping thoughts in our minds. To begin with, for a better understanding we will classify it broadly in two categories:

Commissioned Art: Where artists are invited, patronized or commissioned formally by a public (Eg. Urban Art Commission) or a private body to create and display their art for pre decided public venues, spaces or built forms.

Eg. City Squares, public parks, traffic islands, transport hubs - railway stations, bus terminals, airports etc. monument complexes, tourist places and not so attractive urban built forms in any city - flyovers, foot over bridges, subways etc.

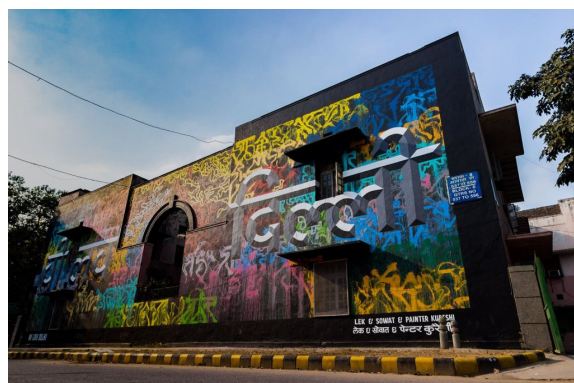


Artists commissioned to work on wall surfaces to beautify the commercial spine in Gurgaon, Haryana.

Non Commissioned Art: Is art carried out by individuals or a group of individuals informally, visible to the public eye.

Eg. A community decorating the outside walls of their homes maybe for a festival or even the supposedly illegal and dark face of urban art - the Graffiti.

The commissioned urban art mainly aims at adding beauty to the cityscape, helps in image building of the city or a town by highlighting the important historical and contemporary events, icons and personalities etc. and also enhances the character of the city by using traditional motifs, colours, textures and styles. Sometimes contemporary murals in large format of street art are done to change the otherwise ugly but very visible built forms in a city.



ART AND URBAN LANDSCAPE

"Giving due credit for my Design learning to the best of the Design Schools that I went to, I would like to share that my maximum understanding of design keeps coming from – the places I visit, the streets I walk on or ride my bicycle on, the people I meet and from their experiences that they share and of course my constant companion – my camera, which I frequently use and capture moments and visuals which I revisit time to time,"

Signage or way finding markers are also a graphic form of urban art which assist the people in finding their ways and routes while travelling within the city or the town. It also plays an important part in providing information about the city to the visitors and also it plays a vital role in adding to the character of the city by its sheer presence in mostly every street, nook and corner of the city.



The beautiful Frescos painted on the entire outside and inside walls of almost all the buildings and havelis in the towns of the Shekhawati region of Rajasthan is a very interesting example of commissioned art in the past.

The rich traders of Shekhawati who travelled a lot, commissioned the local artists to recreate the interesting scenes and episodes experienced by them during their long journeys.

These Frescos were painted in a very distinct art style and were storyboards narrating the traveler's stories to the women, children and the locals who did not have a chance to travel and were mostly confined to their respective towns.

The non commissioned or the informal urban art can be experienced and seen as art by a community in their personal premises mainly to decorate, beautify and establish their status or to symbolize a festival or a ceremony eg. Rangoli an age old form of traditional art done at a large scale during festivals.



Frescoes on Haveli walls at Shekhawati

Art in an attempt to create art - the large scale lighting decorations and temporary structures like puja pandals, marriage pandals during the festive seasons have the ability to change the aesthetics of a cityscape due to their sheer presence, numbers and scale, which cannot be ignored.



ART AND URBAN LANDSCAPE

Worldwide, there are sections of society who have felt oppressed, have not been accepted in the mainstream and have had their grievances against the system. According to them neither the media or any other public forum has ever been interested in talking and sensitizing the world about the issues they have been facing.

Some of the individuals or groups then started expressing their views in the form of illustrations on the walls, floors and ceilings of public spaces and other public property like trains buses etc.

These illustrations contain graphic and textual representation of ideas and beliefs which are considered taboos, socially unacceptable and rebellious in nature. Racial or any other kind of discrimination, sexual abuse, gay/lesbian rights, drugs, free religion and expression etc. and many such issues are seen in this form of 'public art'

According to the mainstream thinkers **graffiti** is considered negative, dark and also an illegal practice that scars the public property, but some of these expressionists have taken graffiti to the next level of visual communication by virtue of their skill and creativity of these illustrations, that it has now been given the status of 'art' and have been granted the freedom to express in many countries.



Urban Art in any form, method or style speaks to the masses at large and they help the onlooker in understanding and experiencing the pulse of the city better. Besides making a city or a town aesthetically pleasing and imparting information, urban art at a subconscious level also adds to the happiness quotient of the residents and the visitors!



Street art at Lodi Colony, New Delhi

Rajan Bhatt is an Architect & Industrial Designer and Founder & Director of BEZEL DESIGN AND COMMUNICATION PVT. LTD, Gurgaon. A passionate photographer and cyclist, he is also the Founder of MOOL, Design and Art Foundation in Jaipur. For more, visit www.bezeldesign.in and www.moolfoundation.com

The Kochi Biennale Foundation (KBF) is a non-profit charitable trust engaged in promoting art & culture and educational activities in India; primary amongst them the hosting of the Kochi-Muziris Biennale. The Kochi-Muziris Biennale seeks to invoke the latent cosmopolitan spirit of the modern metropolis of Kochi and its mythical past, Muziris, and create a platform that will introduce contemporary international visual art theory and practice to India, showcase and debate new Indian and international aesthetics and art experiences and enable a dialogue among artists, curators, and the public.

Kochi-Muziris Biennale

12/12/2016 - 29/03/2017

Bandhu Prasad Alleyamma (Programme Manager)
in conversation with Nidhi Madan



Source: www.metrovaartha.com



Source: www.frontline.in

1. Could you share with us why Kochi, in particular, was chosen as the site for the Biennale?

There couldn't have been a better space than Kochi for symbolic free speech; a space for expressions created and leveraged by the various social activist movements. Kochi is the confluence of heterogeneity, a city where more than 30 non-Malayali communities have, over the centuries, come to find refuge, trade, proselytise and much else, only to develop roots and integrate into the local society. Kochi is among the few cities in India where pre-colonial traditions of cultural pluralism continue to flourish. These traditions pre-date the post-Enlightenment ideas of cultural pluralism, globalisation and multiculturalism. They can be traced to Muziris, the ancient city that was buried under layers of mud and mythology after a massive flood in the 14th century.

2. A few years after the first Biennale, how has its hosting impacted the urban landscape of the city?

The first project that KBF did was the renovation of Durbar Hall into an international quality art-gallery. This was the first architectural intervention. KMB has had a huge influence in recycling disused and/or rundown building. Almost all the biennale venues are heritage sites that are otherwise left unused and in various stages of decay.

3. Has it changed how the residents view and engage with the city? Do you see more or less engagement?

Of course it has changed the way the residents view and engage with the city. Biennale not only highlights the history and historicity of the city but also how it became a 'crucible of cultures' and practices an alternative mode of cosmopolitanism from the prevalent models. And this renewed engagement with the city is not on a superficial level of "celebration" but through a more engaged means of practice. I see more engagement and more avenues opening up for creative and cultural expression. The Biennale Foundation works throughout the year to create a series of Programmes that engage not only the people of the city to an event but also to the city, as it exists today.

4. Does the Kochi biennale now, after its initial success, figure in the planning and design initiatives of the city government, public agencies, stakeholders and also tourism? In infrastructure planning?

KMB figures in some of the design and initiatives of Tourism. Boats with "Welcome to the art capital" project was conceived and executed by the Biennale with support from the Tourism department. The Biennale often invites graffiti artists to work in public spaces across Kochi.

5. Do you see the potential of replicating it as an urban initiative for locals to engage with art in different cities?

There are nearly 300 biennales across the world, and new ones are coming up every year.

6. Is urban art seeing a resurgence from your perspective?

Yes. Kochi is now emerging as one of the most important sites for contemporary art. Other urban centres are also establishing initiatives and residencies that engage people through art and culture.

7. Did any landscape architect participate in the last Biennale? Could you share with us his contribution? And/or others that may be of interest to architects and landscape architects.

There were no landscape artists. There were lot of artists who create site-specific works for the biennale.

The 11th Annual ISOLA Conference was built on a process of '**curating a culture**' for the landscape discipline within its professional and academic limits; aligned to allied disciplines and its relevance with the city as an institution at large. Such an outlook resulted in orienting the notion of the conference to three focus areas: 1. Institutional collaboration, 2. City level exposure and 3. Delegate participation; all contributing towards a **profession in the making**.

Hosted in the city of Bangalore on the 22nd & 23rd of January 2016, the two-day annual conference was more a culmination of events, termed as *habbas* (festivals in Kannada), that were conducted by the ISOLA Bangalore chapter over the preceding 6 months in collaboration with academic institutions in the city. The first *habba*, in collaboration with the Indian Institute of Human Settlements, Bangalore was *Thesis Open Day* – a first of its kind platform for recently graduated landscape architecture students, to present and deliberate on their thesis projects in a public forum. This was followed by the *Professional Speak*, hosted by the BMSCE, Bangalore – where eminent landscape professionals and academicians from the city - Mr. Rohit Marol; Mr. Mohan Rao and Ms. Mahalakshmi Karnad reconstructed the landscape profession for undergraduate architecture students. Next, it was the turn of landscape professionals to be the audience at the *Experts Perspective habba*; invited speakers Dr. T.V. Ramachandra and Ms. Hita Unnikrishnan dissected the notion of ecosystem services from diverse perspectives – from pure science to social sciences, defining a larger operational field for the landscape profession to work within.



The theme of the conference - **Water and Society** – *expanding the Blue Revolution* – was purposefully left open ended. The theme was meant to engage with the critical resource through varied lenses – ecological, social, political; to help better address contemporary development challenges. Themes were categorized as – 1. Water as Natural Resource 2. Water as a Socio Cultural Attribute and 3. Water and Design. Each sub-theme allowing for some bracketing for deliberations, but open ended enough for creative interpretation.

In parallel to these *habbas*, the Bangalore Chapter introduced online engagements directly related to the theme of the annual conference. These were open to ISOLA members as well as the interested public, with the intention to eventually produce a substantial body of research. One such was the *Call for Papers* – an open, national and international invitation to professionals and students to submit papers addressing any of the sub-themes.

Evaluated through a double-blind peer review process, the panel comprised of Mr. Amit Prothi, Mr. Prashant Hedao and Dr. Minakshi Jain, 18 papers were selected that discuss, question and opine on the relation of water and society.

The **Panorama** – a visual perspective based engagement, that has been part of ISOLA conferences over the last few years, was initiated with the same thematic background, but the domain was expanded to include artistic impressions, poetry, photography, caricature as well as videography.



Of the invited speakers, it is important to note that none were from within the fraternity, but whose engagement with profession and academia intersected closely with the domain of landscape. The speakers were chosen carefully based on the relevance of their work in the global south. This ensured the presentations and discussions remained rooted and relevant to the Indian context.

As the convenor, Mr. Mohan Rao introduced the conference presenting the critical nature of the theme in contemporary society and positioned the conference as a framework for learning. Mr. Aromar Revi, Director, Indian Institute of Human Settlements, delivering the keynote, extended this introduction and the argument of water being the most critical element of Biosphere, so much so, that it should have been called Water and not Earth!



He constructed his talk on an overview on associations between livelihood, culture and resource through various cases of cities; on the manner in which land and waterscapes have moulded cultures; concluding with the need to design for environment and conservation rather than design for living.

Mr. Dilip Da Cunha, Adjunct Professor School of Design (PennDesign), University of Pennsylvania, and Mr. Anthony Acciavatti, Principal, Somatic Collaborative, New York, presented the first technical session.

Mr. Da Cunha extended his current research and opened up a different perspective on looking at our land - on whether is it a river terrain or a rain terrain. Mr. Anthony Acciavatti discussed in detail his decade long association with the river Ganges and the differential atlas required to map and understand the temporality of shifting landscapes.

This session's highlights were some engaging cartographical illustrations on the representation and identification of water and subsequently shifted the focus on more intangible association of water and the community. In the second technical session, Mr. Tency Baetens explained in depth the science behind treatment and management of waste water and idea of the 'vortex' Dewats treatment. But the much larger debate he addressed was the idea of water security towards a sustainable habitat



Extending this argument, Dr. Harini Nagendra, Professor of Sustainability at Azim Premji University, Bangalore, oriented her discussion on the socio-cultural association of water within the landscape of Bangalore and the very notion of understanding lakes as 'urban commons'. The second day was driven by the more tangible imprints of water as a result of specific interventions. Mr. Alejandro Eccheverri, director of URBAM, Medellin, articulated his talk specific to the Medellin geography and discussed at length, experiments within neighbourhoods.

The objective of creating sustainable models of performance from a social and physical environmental perspective brought forth ways of direct engagement with the political landscape. Dr. Fabio Masi, Technical Director, R&D Manager, IRIDRA concluded the speaker sessions with a crafted and a highly detailed presentation on sustainable urban drainage systems that provided the audience with probably the most tangible output for professional engagement.

The conference was specifically conceived to accommodate interactive sessions in the workshop format between delegates. The workshops allowed delegates to engage with speakers as well as invited moderators – Mr. Krishna Balakrishnan, Mr. Shishir Raval, Ms. Shubhada Kamalapurkar and Ms. Savita Punde.

Speakers and moderators were assigned to one of the nine groups – with about 30 delegates in each – with delegates assigned to their pre-selected choice. Each workshop session witnessed intense discussions and deliberations, that lasted cumulatively for a whole day of the two-day event. Though the workshops had predefined provocations, they eventually resulted in very varied outcomes, not always critical but certainly engaging and entertaining. From groups discussing the profession at large, to deliberating on the idea of water – the workshop presentations had it all – even an impromptu dance and a wonderfully scripted satire on the challenges of the profession.

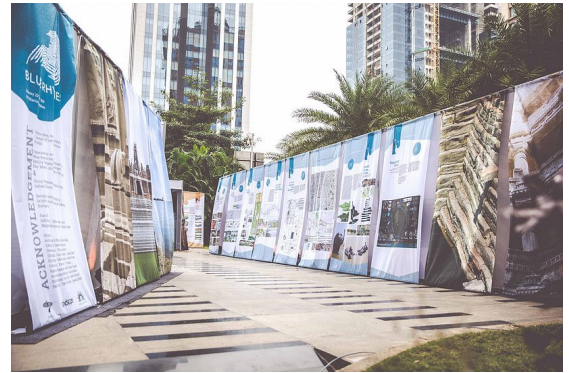
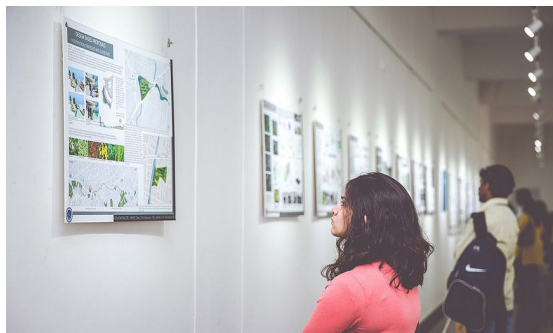


The workshops were understandably the highlight of the conference, allowing intense engagement and helped connect the landscape community informally across hierarchies. This was particularly noticeable in the concluding session by Mr. Rohit Marol, thanking everyone involved in the conference in an informal manner.

If one thought the conference had only the above to offer, there was more! This year also witnessed a curated exhibition based on the theme of the conference – **Blue Rhymes** – whose content was researched by LA Journal and designed and produced by the Srishti School of Art, Design and Technology.

The exhibition was a collection of narratives reflecting the prodigious body of work from across the subcontinent, engaging with one of the most challenging issues of contemporary urbanization – water. The exhibition brought together both built and unbuilt contexts, narratives from the past and present, works from practice, academia as well as traditional practices. The stories highlighted diverse thinking and values in maintaining an evolved and symbiotic relationship with water across varied geographies. The exhibition was an attempt to bring together varied perspectives of looking at idea of water in the realm of nature and culture.

This, however, was not the only exhibition; the ISOLA Bangalore Chapter hosted a public exhibition at the Rangoli Metro Art Center, from the 21st to the 28th of January 2016. The exhibition was a collection of students' works and their perspectives on **Water and Society** expanding the *blue revolution*. The exhibition displayed an eclectic mix of ideas, strategies, visions, narratives, as well as analytics of the notion of water and its correlation and interface with the urban.



The perspectives displayed in the exhibition were an outcome of a rigorous engagement and introduction of the architectural student fraternity to the landscape profession. The engagement was conceived as a platform to generate a productive dialogue with public agencies of the city to address development initiatives imperative to current trends of urbanization. The exhibition was meant to bring together diverse perspectives, experiences and skills that connect water and the landscape profession and to critically examine the multiple facets of water as the determinant for interventions at all scales.

In addition, there were the heritage walks, specifically curated on the theme of Water and Society that allowed delegates to explore the natural, cultural and social history of Bangalore.

Overall, the success of the conference was not determined by the outcome of speaker presentations and moderated discussions alone; it was also the opportunity accorded to each one of the delegates to explore ideas, experiences, thoughts and perspectives. The process had allowed the profession to engage in productive activities for the past few months across many forums, institutes, public agencies and within the professional body. If ISOLA as an organisation aspires to be the preeminent forum working for the profession and its role in the public realm, it should continue to curate a culture for inter-disciplinary learning and engagement.

ISOLA CENTRE EVENTS

The 11th Annual General Meeting of ISOLA was held at GIDC Bhawan, CEPT University, Ahmedabad on the 27th of August 2016. Following were the salient points that formed a part of the meeting agenda:

The audited accounts of the Society for the financial year ended March 2016 were tabled and approved. The EC was happy to report that the financial health of the Society has considerably improved over the last 3 years.

The members were given a demonstration of the online membership registration, renewal, member database access and online voting for resolutions and elections provisions that have now been made. The newly designed website with a special member-only section and improved navigation was also shown to the members. The new website has been operational since October 2016.

The members were briefed about the sixth cycle of ISOLA Awards and the theme and format of the upcoming 12th annual conference in Goa. The General Body welcomed the decision to name the ISOLA Students Award as the PRABHAKAR BHAGWAT STUDENT AWARD for BEST THESIS and the NASA ISOLA Landscape Trophy to be renamed as the MOHAMMED SHAHEER ISOLA TROPHY.

Education Board Workshop

The ISOLA Education Board had an intense and productive 2-day working session in which the following topics were discussed :

ISOLA Recognition Standards and Procedures for nation-wide MLA Programme (Savita Punde, Deepa Maheshwari and Savita Raje)
Framework of teaching Landscape Architecture in B.Arch. courses (Abhijit Natu, Rohit Marol and Nikhil Dhar)

Research projects sponsored by ISOLA (Abhijit Natu and Sachin Jain)

Thrust areas for Research (Abhijit Natu, Sachin Jain, Saurabh Popli and Nikhil Dhar)

Future working on the feasibility of BLA programs (Savita Raje)

Workshops for teachers of MLA programs (Saurabh Popli, Abhijit Natu and Sachin Jain)

Finalisation of brief for the Mohammed Shaheer ISOLA Trophy (Nikhil Dhar)

Naming of Prabhakar Bhagwat Student Award for the Best MLA Thesis

2ND ROUND TABLE ON NATURAL CITIES



Amravati, the new capital of Andhra Pradesh is proposed on the most fertile flood plain of the country with 5 crops a year and a high per capita income. However, the present proposal is a completely unsustainable model that will cause an irreversible impact on farming, economy and environment. ISOLA and Natural Heritage First have come together with the activists and farmers of the region to raise a voice against the present proposal, the Subarna Plan (conceptualized by a Singapore firm) and have offered indigenous solutions which are possible to implement and be a model for future. The Amravati Natural City proposal has been conceptualized as the first self-sustaining city of the future, showing the future direction for urban living. At the round table in Vijaywada (5th July 2016), and Delhi (29th July 2016) these issues were discussed and presented to public, stake holders and press. Former Honorary President ISOLA, Sachin Jain presided on behalf of ISOLA and was also represented by ISOLA treasurer Neelima Soni, ISOLA Delhi Chapter Chair Jasleen Waraich and Secretary Madhup Mazumder besides other members. There were presentations by Sachin Jain (on Urbanization Dilemmas) and by Prof. Vikram Soni & Mr. Romi Khosla (on Amravati Natural City).

CHAPTER EVENTS - DELHI CHAPTER

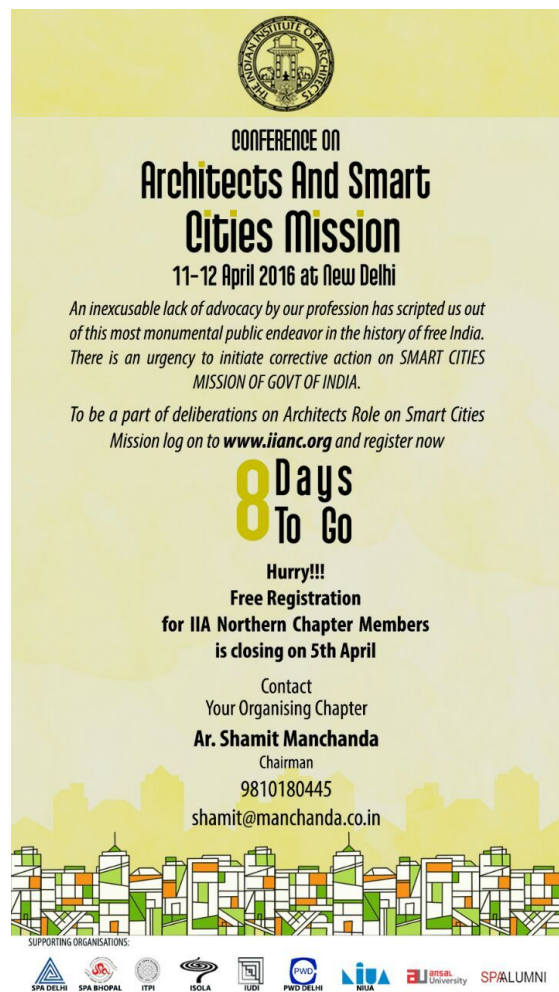
Our enthusiastic Chapters have organised events in different cities, throughout the year, some in collaboration with other professional bodies. Do visit the website to read more about chapter events.

“Architects and the Smart City Mission”: A conference Organised as a collaborative partnership with The Northern Chapter, The Indian Institute of Architects, The Northern Chapter, The Indian Institute of Architects, in partnership with IIA Haryana, Punjab, Himachal Pradesh and UP & Uttarakhand Chapters, organised a Northern Regional Conference – “Architects and the Smart City Mission” at PHD Chambers of Commerce, Khel Gaon Marg, New Delhi on the 11th & 12th of April 2016, for evolving modalities for a wider participation by Architects in the Smart City Mission. The Objective of the Conference was to provide a platform for Professionals, Academicians & Industry to come together for blending Research & Practice to jointly evolve appropriate solutions to support the Smart Cities of the future.

ISOLA Delhi Chapter partnered with IIA NC to make this Conference a great success. Landscape Architects **Minesh Parikh** and **Sujata Hingorani** from Delhi participated as speakers on behalf of ISOLA, and ISOLA Delhi Chapter Chairperson **Jasleen Waraich** participated in panel discussion.

The conference ended with a joint road map drafted by all the partner organisations in the conference which outlined the course of action for the year ahead. The event was attended by over a 350 participants. As a collaborative event, it marked the beginning of a new alliance to address common concerns making this session quite meaningful.

CONFERENCE ON ARCHITECTS AND SMART CITIES MISSION



CONFERENCE ON
Architects And Smart Cities Mission
11-12 April 2016 at New Delhi

An inexcusable lack of advocacy by our profession has scripted us out of this most monumental public endeavor in the history of free India. There is an urgency to initiate corrective action on SMART CITIES MISSION OF GOVT OF INDIA.

To be a part of deliberations on Architects Role on Smart Cities Mission log on to www.iiac.org and register now

8 Days To Go

Hurry!!!
Free Registration
for IIA Northern Chapter Members
is closing on 5th April

Contact
Your Organising Chapter
Ar. Shamit Manchanda
Chairman
9810180445
shamit@manchanda.co.in

SUPPORTING ORGANISATIONS:

SPAL DELHI SPA BHOPAL IITI ISOLA IUII PWD DELHI NEDA IIAI BSRAL University SPALUMNI



CONFERENCE ON
Architects And Smart Cities Mission
11-12 April, 2016
PHD Chambers of Commerce
Khelgaon Marg, New Delhi

Jointly Organised by
Northern, Haryana, Punjab, Himachal Pradesh, U.P. & Uttarakhand Chapters of
The Indian Institute of Architects

Speakers

Inaugural Address by **Ar. Sahyender Jain**, Hon'ble Minister of Govt. of NCT of Delhi
For the following 5 technical sessions, we have invited expert speakers, from amongst the profession, academics and industry from across the country.

Sessions Names

- Smart City Mission - The Government Perspective
- Architects Build Cities - The Industry Perspective
- Toward a Better City - Integrating Academic Research with Industry
- Redefining the Architects Role - For Practices of the Future
- Realizing National Urban Missions: The Urban Design Approach

Supporting Organisations

SPALUMNI IIAI BSRAL University SPAL DELHI SPA BHOPAL IITI ISOLA IUII PWD DELHI NEDA IIAI BSRAL University SPALUMNI

CHAPTER EVENTS - DELHI CHAPTER

DELHI WALK SERIES 2015-16

ISOLA DELHI NCR CHAPTER
PRESENTS
WALK SERIES
SEPTEMBER 2015- MARCH 2016



26TH SEPTEMBER, 2015, SATURDAY
Aravalli Biodiversity park
Mr. Vijay Dhasmana

1ST NOVEMBER, 2015, SUNDAY
Red Fort
Dr. Priyaleen Singh

21ST NOVEMBER, 2015, SATURDAY
Hauz Khas Complex
Ms. Nupur Prothi Khanna

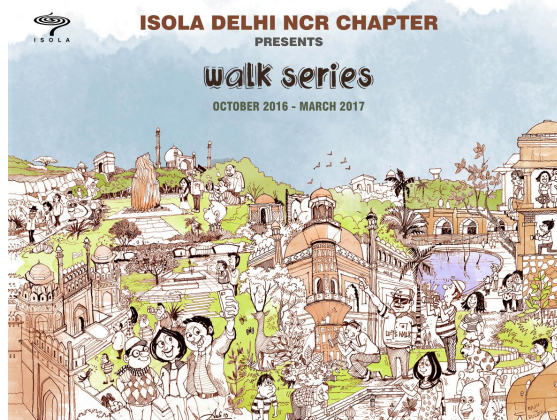
5TH DECEMBER, 2015, SATURDAY
Yamuna Biodiversity Park
Dr. Faiyaz Khudsar

30TH JANUARY, 2016, SATURDAY
Garden of Five Senses
Mr. Pradeep Sachdeva

12TH MARCH, 2016, SATURDAY
Raj Ghat & Shakti Sthal
Prof. Samir Mathur

To register please write to
ravpevents.isoladelhi@chapter@gmail.com

ISOLA DELHI NCR CHAPTER
PRESENTS
walk series
OCTOBER 2016 - MARCH 2017




Walk at Aravalli Bio diversity Park with Mr. Vijay Dhasmana



Walk at Yamuna Bio-diversity Park with Dr. Faiyaz Khudsar



Walk at Garden of five senses with Mr. Pradeep Sachdeva



Walk at Shakti Sthal with Prof. Sameer Mathur



Walk at Aravalli Bio diversity Park with Mr. Vijay Dhasmana

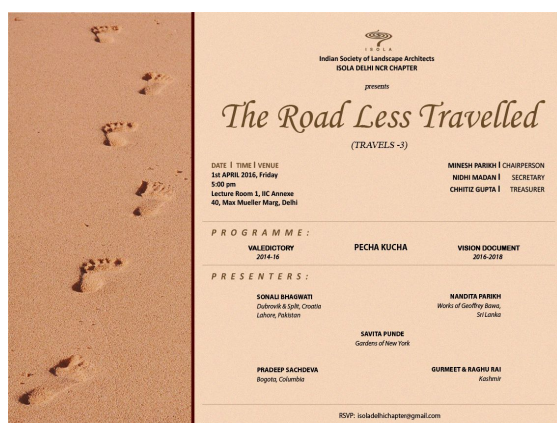


CHAPTER EVENTS - DELHI CHAPTER

PECHA KUCHA SESSION

ISOLA Delhi chapter members met briefly for a 20x20 session to reflect on, **The Road less Travelled** at IIC on 1st of April, 2016 at IIC. The 5 sessions included inspired presentations on tours across the world with changing cultural contexts. The speakers, Sonali Bhagwati (Eastern Europe and Pakistan), Nandita Parikh (Works of Geoffrey Bawa, Sri Lanka), Savita Punde (Gardens of New York), Pradeep Sachdeva (Bogota, Colombia), Gurmeet and Raghu Rai (Floating Neighbourhoods, Srinagar) kept the audience enthralled with their unique experiences and their talks.

The event served as a great opportunity for us to fraternize with co professionals and allowing a cross sharing of knowledge and ideas across various design disciplines.



ECO TOURISM AND ECO RESORTS

This was the first event in a series of parallel events being organised across the country by various Chapters of ISOLA, (Indian Society of Landscape Architects) leading up to the ISOLA Annual Conference in Jan 2017, titled: Changing Climates and Evolving Landscapes, was held at the IIC, Delhi on 23rd July 2016

Hitesh Mehta, Landscape Architect from Florida, with over 28 years of experience, was the first speaker. The second speaker, **Dean D'Cruz**, architect, is a Partner and Principal Architect in Mozaic Design Combine', at Goa.

The presentations looked at how a symbiotic and complex relationship between the environment and tourist activities is possible when this philosophy can be translated into appropriate policy, careful planning and tactful practicum. Eco tourism can offer solutions which create work and living opportunities in rural areas to stop people from migrating to big cities where infrastructure cannot keep pace with migration. The talks also looked at how innovations in design and operations of Eco resorts contribute to the Social and Ecological Integrity of their given environments.



CHAPTER EVENTS - BANGALORE CHAPTER

THESIS OPEN DAY v2.0

The National ISOLA Thesis Open Day was conducted on Saturday 20th August 2016, 1330 hrs onwards in collaboration with the IIHS at its Bangalore City Campus. The Thesis Open Day is primarily created as a platform for students of Landscape Architecture to present their thesis cases in order to gain an overview of the scales, issues and methodologies governing Landscape Architecture academia. In order to make the thesis open day more interdisciplinary, thesis works from other disciplines that intersect with the larger domain of landscape architecture are also selected

HABITAT DESIGN
 WOUNDED LANDSCAPES
 STUDY OF LANDSCAPE CHARACTER AND INTERVENTION FOR THE VULNERABLE AREAS ALONG THE PATH OF GANGA FROM KODIYALA TO RISHIKESH
 LANDSCAPE DESIGN FOR A PUBLIC REALM AT RAMESHWARAM
 LANDSCAPE INTERVENTION FOR AN EXISTING PARADISE: A VILLAGE IN KERALA
 MANIFESTATIONS OF SCRIPTURAL AND RITUAL LANDSCAPES INTO PRAGMATIC FORMS
 CREATION OF OPEN SPACE NETWORKS TO ENHANCE THE QUALITY OF URBAN ENVIRONMENT IN THE SMALL CITY OF BHOIRAPUR
 LANDSCAPE INTERVENTION FOR THIRUVANMALAI
 TRANSFORMING MORBI: FROM HARSH INDUSTRIAL INHERITANCE TO A LIVABLE URBAN FABRIC
 HOLISTIC SITE PLANNING AND LANDSCAPE DEVELOPMENT OF EDUCATIONAL CAMPUS-CENTRAL UNIVERSITY OF JHARKHAND, RANCHI
 WATER AND GREENS AS A TOOL FOR URBAN REGENERATION

ISOLA
 INDIAN SOCIETY OF LANDSCAPE ARCHITECTS
 IN COLLABORATION WITH
 iihs
 INDIAN INSTITUTE OF HUMAN SETTLEMENTS
 BANGALORE

THESIS OPEN DAY v 2.0
 www.isolabangalore.org
SATURDAY 20 AUGUST 2016
 1330hrs ONWARDS
IIHS BANGALORE CITY CAMPUS
 1000 Cross Rd, Bangalore Nagar, Kothur Nagar, Bangalore

A WARM WELCOME TO ALL THE NEW ISOLA MEMBERS
(updated from January 2016 to December 2016)

FELLOW MEMBER

Ms. Divya Rajesh	R-47/F 2016
Mr. Krishnakumar M.R	M-65/F 2016
Mr. Rajesh George	G-40/F 2016
Ms. Rohini Prasad	P-65/F 2016
Ms. Shrila Gupta	G-39/F 2016

ASSOCIATE MEMBER

Ms. Deepali Pandey	P-66/A 2016
Ms. Shajeena T.V.	V-34/A 2016
Ms. Sristy Agarwal	A-29/A 2015
Ms. Tintu Rajan	R-48/A 2016

GRADUATE MEMBER

Mr. Anupam Kashyap	K-82/G 2016
Ms. Atreyee Khanna	K-81/G 2016
Ms. Darshi Mehta	M-63/G 2016
Ms. Keerthy J.S	J-24/G 2016
Ms. Khushboo Parikh	P-64/G 2016
Ms. Kinjal Chauhan	C-31/G 2016
Mr. Nimit Mehta	M-64/G 2016
Ms. Radhika Tyagi	T-18/G 2016
Ms. Shachi Bahl	B-52/G 2016
Ms. Khushboo Adhiya	A-30/G 2016
Mr. Amey Korgaonkar	K-84/G 2016
Ms. Shivani Mamidala	M-70/G 2016

STUDENT MEMBER

Ms. Roshni Agarwal	A-32/S 2016
Ms. Neha Apre	A-31/S 2016
Mr. Dheeraj Bandil	B-53/S 2016
Ms. Shweta Das	D-31/S 2016
Mrs. Shubhangi Desai	D-32/S 2016
Ms. Kritika Gaggar	G-42/S 2016
Ms. Aditi Galande	G-41/S 2016
Ms. Janki Gonawala	G-43/S 2016
Mr. Sampat Jhorar	J-25/S 2016
Mr. Kapil Kumar	K-83/S 2016
Ms. Krutika Madkaiker	M-67/S 2016
Ms. Sayali Mahajan	M-72/S 2016
Ms. Priyanka Malik	M-68/S 2016
Mr. Samiran Mandal	M-71/S 2016
Ms. Ayesha Mathur	M-73/S 2016
Ms. Swati Mudgal	M-69/S 2016
Ms. Nisha Nelson	N-26/S 2016
Ms. Dhara Panchal	P-69/S 2016
Ms. Pinal Patel	P-68/S 2016
Ms. Ashwini Phatak	P-67/S 2016
Ms. Pragati Prasoon	P-70/S 2016
Ms. Sakshi Rajput	R-49/S 2016
Mr. Mayukh Sadhukhan	S-105/S 2016
Ms. Snehal Shende	S-106/S 2016
Ms. Amrita Slatch	S-102/S 2016
Mr. Sagar Sonawane	S-104/S 2016
Ms. Sailee Surve	S-103/S 2016
Mr. Kunal Tiwari	T-19/S 2016
Ms. Jyoti Yadav	Y-6/S 2016

The ISOLA newsletter seeks contributions from members in the form of theme based articles, papers, photo essays and more.. We will be announcing the theme for the next edition shortly, via email.

Do send in your contributions to the newsletter team at
isolanewsletter@gmail.com

Editor

Manjusha Ukidve

Editorial Team

Neelima Soni

Nidhi Madan

Shilpa Chandawarkar

Registered office

Indian Society of Landscape Architects

No.312, 3rd Floor, Chitrarath Complex,

Off. C.G. Road, Navrangpura Near President Hotel), Ahmedabad 380009, Gujarat, India

Tel: +91- 79-40323110

Email: isolasecretary@gmail.com